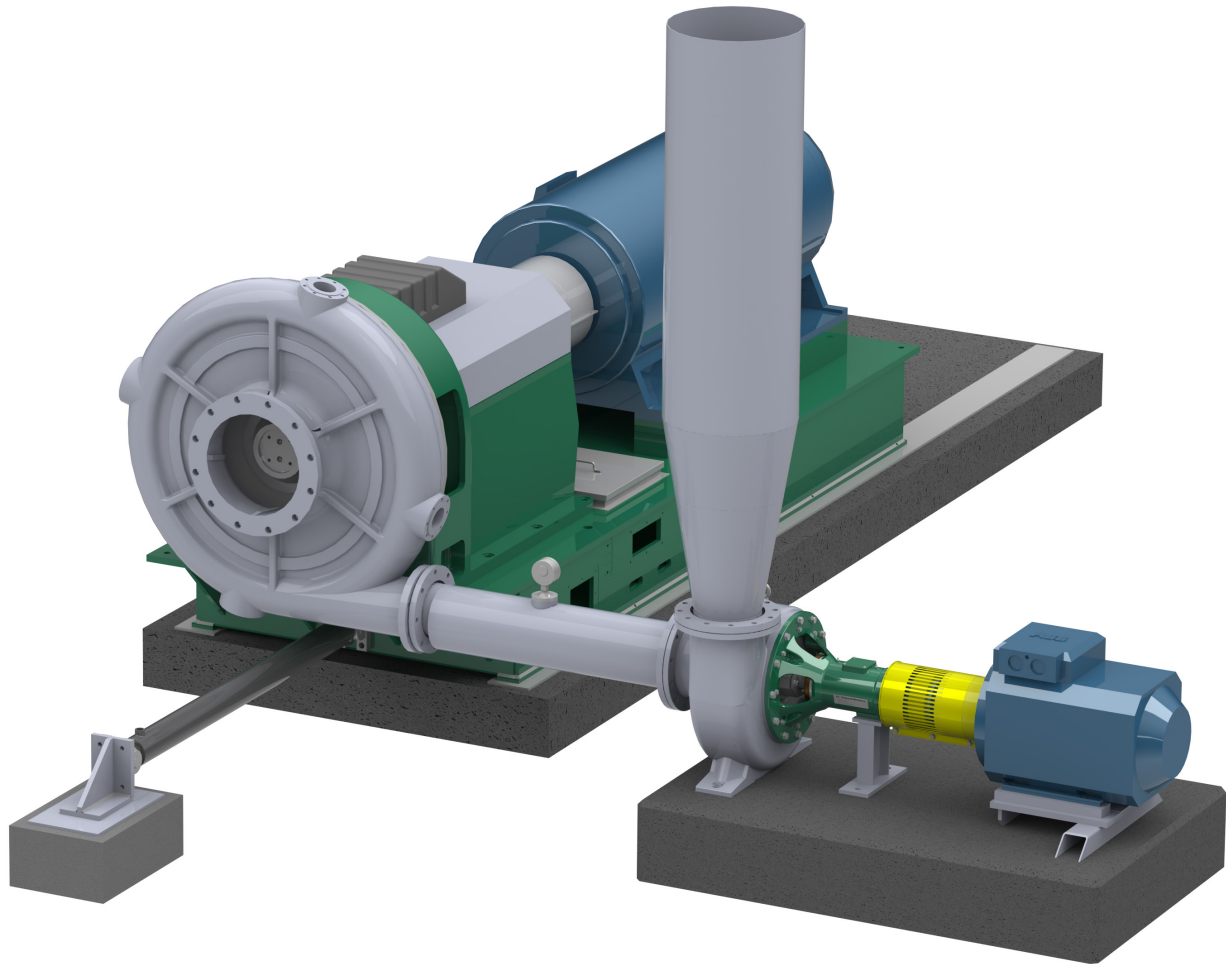




Cellwood Machinery
FOR BETTER PULP AND PAPER

Grubbens Boosterpump

P26-11, P26-15, P40-14, P40-25



ADVANTAGES

- MC pulp consistency 8–12%
- Low Energy consumption
- Cost efficient installation
- Simple and stable control
- No vacuum internal or external needed
- No standpipe needed



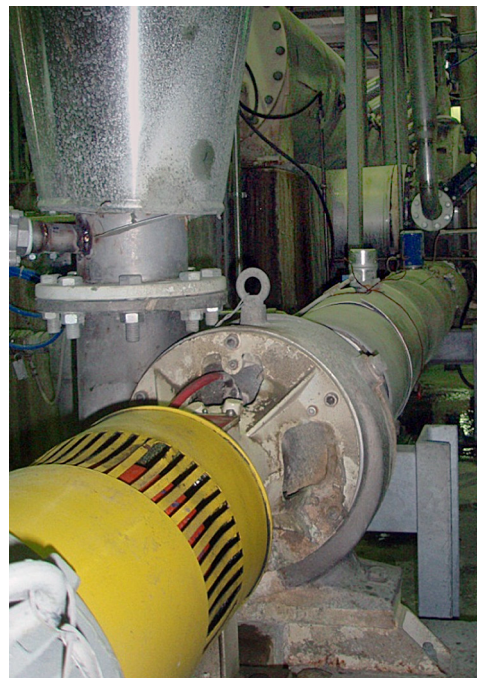
CELLWOOD
MACHINERY



The Grubbens pump is due to its design suitable for use as a Booster pump directly after the Krima Disperser. The two units together form a unique solution for Medium Consistency (MC) discharge.

The outlet consistency of the Krima disperser can be kept at 8–12% and the pulp can then be pumped to the top of the stock tower by the Grubbens booster pump. The Krima Disperser outlet pressure is controlled by the pump speed. There is thus no need for a backpressure control valve when using the pump.

The Grubbens booster pump is suitable for all Krima Dispersers. The size of the pump depends on static height, total pipe run, pipe diameter, capacity, temperature and consistency. All of those values will have to be considered for each installation.



Cellwood Machinery
FOR BETTER PULP AND PAPER

Cellwood Machinery AB • Box 65 • SE-571 21 Nässjö • Sweden • Phone +46 380-760 00 • Fax +46 380-141 23
Street address • Storgatan 53 • SE-571 32 Nässjö • Sweden • E-mail sales@cellwood.se • www.cellwood.se

— a member of the Cellwood Group —